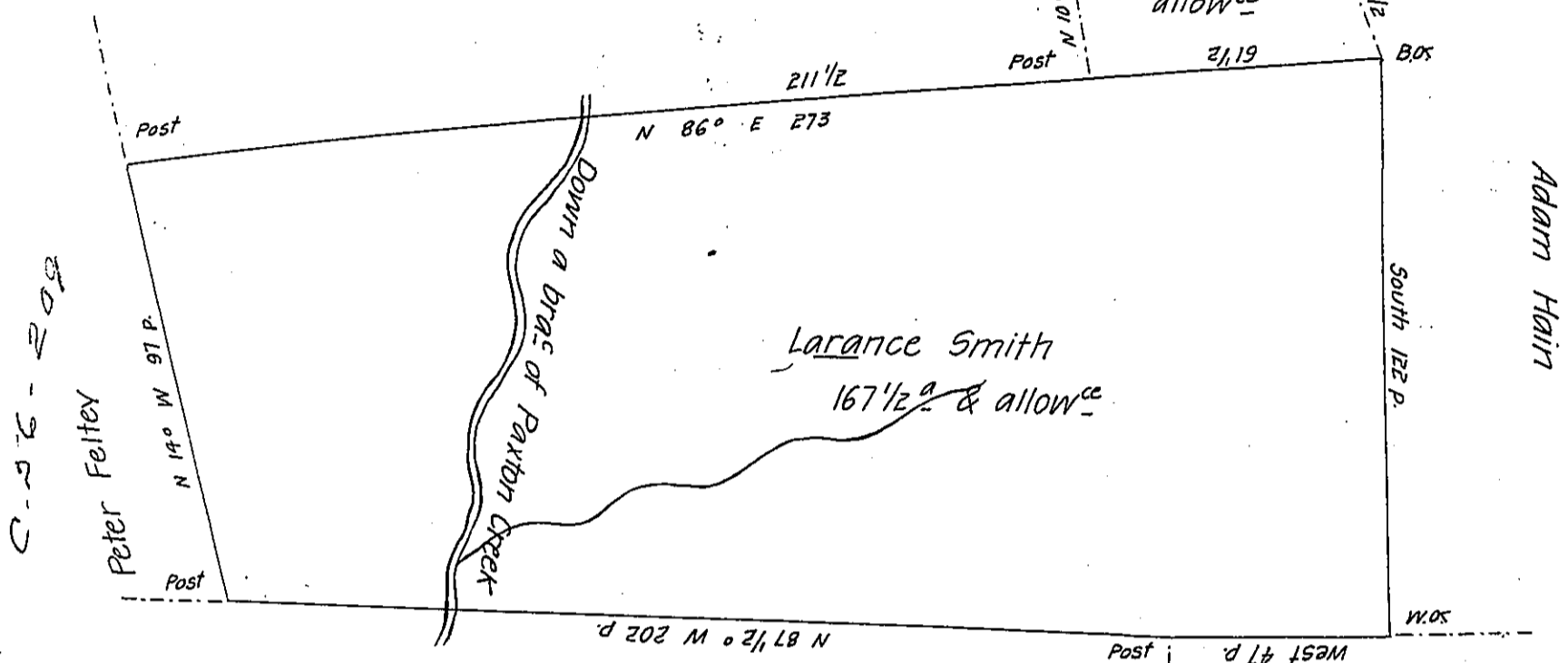


C-167-23

David Patton

Remainig. part of
James Beatys Survey

chest or
N 73° E 52'
Land Survey
to Jas. Beaty in
part 13³/₄ a &
allow^{ce}
21,19



Robt Gillcreest decd Benjⁿ Bumberger

C 107 145
John Gillcreest

Resurvey'd for Laurence Smith on the 23^d of November 1785 the above discribed Tract of Land bounded by black lines Containing one hundred sixty seven acres a half & allow^{ce} of Six P. Ct Situate in Paxton Township Dauphin County by warrant granted William Mc Mullan 14th day of May 1744.

To John Lukens Esq^r
Surveyor General.

P. Bartrem Galbraith D. S.

N. B. the 13³/₄ a inclosed by dotted lines is a part of land surveyed for James Beaty by warrant, the greatest part of which is improved by Laurence Smith.

B. Galbraith.

IN TESTIMONY that the above is a copy of the original remaining on file in the Department of Internal Affairs of Pennsylvania, made conformably to an Act of Assembly approved the 16th day of February, 1833, I have hereunto set my Hand and caused the Seal of said Department to be affixed at Harrisburg, this fifteenth day of May 1906.

James P. Brown
Secretary of Internal Affairs.